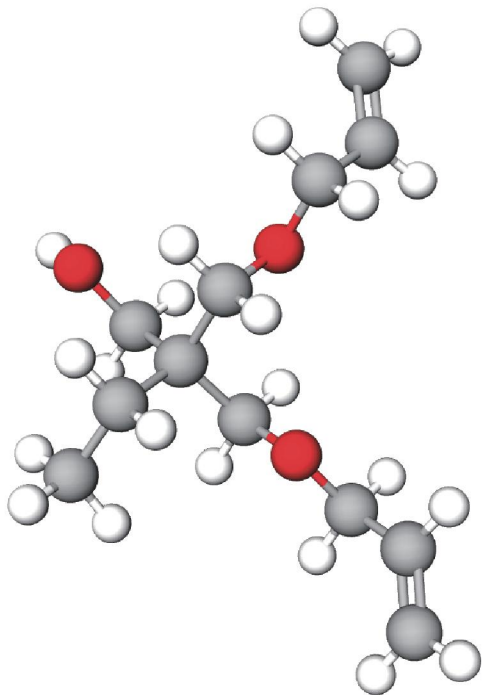


PREC

HIGH-PERFORMANCE TMPDE MONOMER

Trimethylol Propane Diallyl Ether CAS#682-09-7



☺ Providing Air Drying Property

△ Increasing Resin Hardness

🛡 Enhancing Resin Weather Resistance

🔪 Enhancing Resin Corrosion Resistance

🔪 Enhancing Paint Abrasion Resistance

Applications



Unsaturated Polyester Resins



Carbomer Resins



Other Resins

Typical Properties

Empirical Formula	C ₁₂ H ₂₄ O ₃
Molecular Weight	214.3
CAS No.	682-09-7
Appearance	Colorless Transparent Liquid
TRIMETHYLOL PROPANE MONOALLYL ETHER	6 - 14 %
TRIMETHYLOL PROPANE DIALLYL ETHER	≥ 82 %
TRIMETHYLOL PROPANE TRIALLYL ETHER	3 - 8 %
Color	≤ 30
Acidity	≤ 0.01%
Boiling Point	135 °C (@13 mmHg)
Flash Point	127 °C
Melting Point	-80 °C
Moisture	≤ 0.1%
Liquid Density	0.955 g/cm ³
Liquid Viscosity	15 ± 2 cP
Refractive Index	n ₂₀ /D 1.458
Hydroxyl Number	260 - 290 mgKOH/g
Solubility in Water	3 g/L

Packaging

Steel Drum: 200 KG/Drum

IBC: 1000 KG/Container

ISO Tank: 20 MT/Tank

Safety & Handling


Keep away from fire

Avoid direct sunlight, rain, and high temperature during transportation

Store in cool, shady, and ventilated conditions



 0086-755-83622997  sales@prechems.com  www.prechems.com

 15/F, Building D1, Nanshan iPark, Nanshan District, Shenzhen, China